



Designed for pure open-to-the-skies
enjoyment – the spacious

TARGA 48 OPEN



Every. Perfect. Detail.

Sparkling experiences to treasure

The Targa 48 OPEN offers the space and luxury to enjoy sun-drenched days and overnight stays in style (especially now, with the signature, Alberto Mancini-designed windows sweeping across its hull). Entertaining on the main deck? Activate the retractable canvas roof and sunlight floods in on you and your guests. Want to relax? Stretch out on the large sunbeds, dive off the submersible bathing platform or take a break below deck - there's plenty of room.

With its exceptional manoeuvrability, the Targa 48 OPEN combines the performance and handling of a smaller vessel, U-shaped seating in the large cockpit and companion seating opposite the helm, there's plenty of room for all your guests. Let the views through the large panoramic windows speed by, as the Targa 48 OPEN creates those memories you'll all remember for years to come.



TARGA
48 OPEN

INTRODUCTION

MAIN
FEATURES

EXTERIOR
DESIGN

INTERIOR
DESIGN

PRINCIPLE
DIMENSIONS

GENERAL
ARRANGEMENTS

CELEBRATING
50 YEARS

DEALERS

FAIRLINE
YACHTS



TARGA
48 OPEN

INTRODUCTION

MAIN
FEATURES

EXTERIOR
DESIGN

INTERIOR
DESIGN

PRINCIPLE
DIMENSIONS

GENERAL
ARRANGEMENTS

CELEBRATING
50 YEARS

DEALERS

FAIRLINE
YACHTS

Share the exhilaration

Inside and out, the Targa 48 OPEN maximizes opportunity for free-flowing entertainment. Enjoy sociable days, comfortable nights and responsive handling at your fingertips.

- **Powered sliding canvas roof**
- **Garage for Williams 285 TurboJet**
- **Large mid-master cabin and en suite with separate shower compartment**
- **Companion seating opposite helm**
- **Full-height fridge/freezer**
- **Large forward and aft sunbeds**

Optional equipment highlights:

- High capacity air conditioning
- V-berth forward guest cabin
- Third cabin in lieu of saloon
- Sofa in the master cabin that converts into an additional bed
- Folding teak table in the spacious cockpit seating area
- Submersible bathing platform with 400kg lifting capacity
- Gyroscopic stabiliser
- A choice of powerful engines:
 - 2 x Volvo Penta IPS600 D6-435, diesel with 435mhp each and a maximum speed of 32 knots
 - 2 x Volvo Penta IPS700 D8-550, diesel with 550mhp each and an estimated maximum speed of 34 knots



TARGA
48 OPEN

INTRODUCTION

MAIN
FEATURES

EXTERIOR
DESIGN

INTERIOR
DESIGN

PRINCIPLE
DIMENSIONS

GENERAL
ARRANGEMENTS

CELEBRATING
50 YEARS

DEALERS


FAIRLINE
YACHTS



TARGA
48 OPEN

INTRODUCTION

MAIN
FEATURES

EXTERIOR
DESIGN

INTERIOR
DESIGN

PRINCIPLE
DIMENSIONS

GENERAL
ARRANGEMENTS

CELEBRATING
50 YEARS

DEALERS


FAIRLINE
YACHTS

Enjoyment at your command with the Targa 48 OPEN



TARGA
48 OPEN

INTRODUCTION

MAIN
FEATURES

EXTERIOR
DESIGN

INTERIOR
DESIGN

PRINCIPLE
DIMENSIONS

GENERAL
ARRANGEMENTS

CELEBRATING
50 YEARS

DEALERS


FAIRLINE
YACHTS



TARGA
48 OPEN

INTRODUCTION

MAIN
FEATURES

EXTERIOR
DESIGN

INTERIOR
DESIGN

PRINCIPLE
DIMENSIONS

GENERAL
ARRANGEMENTS

CELEBRATING
50 YEARS

DEALERS


FAIRLINE
YACHTS



TARGA
48 OPEN

INTRODUCTION

MAIN
FEATURES

EXTERIOR
DESIGN

INTERIOR
DESIGN

PRINCIPLE
DIMENSIONS

GENERAL
ARRANGEMENTS

CELEBRATING
50 YEARS

DEALERS

FAIRLINE
YACHTS

Interiors for luxurious entertaining

In the spirit of building the perfect yacht at every possible level, we have also carefully created four different interior design schemes for you to choose from:



AMALFI

Inspired by Liguria's local architecture, this scheme exudes the sunny warmth synonymous with fragrant Italian lemon trees and the umbrella-lined shores of the Amalfi coast.



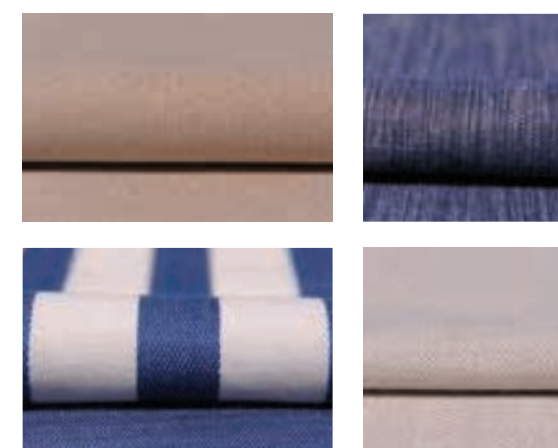
CAPRI

Understated, earthy colours, effortlessly combined with rich natural textures. All the hallmarks of an interior design collection that is as gentle as the Mediterranean breeze.



HAMPTONS

Evoking elegant vintage design cues, whilst offering a bold and contemporary interpretation of the luxury that was once the preserve of America's East Coast.



ST. TROPEZ

An ode to the sea where all manner of deep, oceanic blues tastefully swirl with muted greys, delicate creams and classic nautical motifs.



Entertains with style

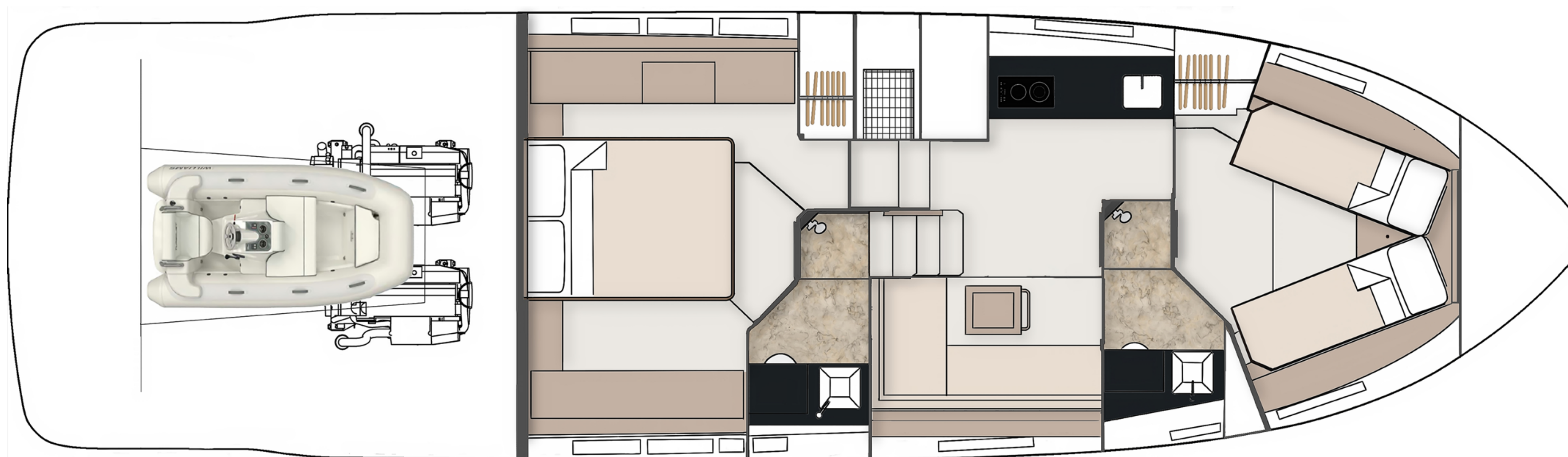
- Length overall (inc. pulpit) fixed platform: 49'2" (15.0m)
- Length overall (exc. pulpit) fixed platform: 48'6" (14.8m)
- Length overall (inc. pulpit) submersible platform: 51'4" (15.64m)
- Length overall (exc. pulpit) submersible platform: 50'8" (15.44m)
- Beam (inc. gunwale): 14'2" (4.32m)
- Number of berths: 4 – 7
- Draught: 3'10" (1.17m) unloaded
- Height above waterline (inc. arch & nav. light mast): 15'1" (4.6m)
- Transport height: 15'10" (4.83m)
- Dry weight (approx.): 12.79 imp. tons / 14.33 US tons (13,000kg)
- Fuel capacity: 288 gallons / 346 US gallons (1,309 litres)
- Water capacity (inc. calorifier): 106 gallons / 127 US gallons (482 litres)

[CLICK HERE FOR
FULL SPECIFICATIONS](#)



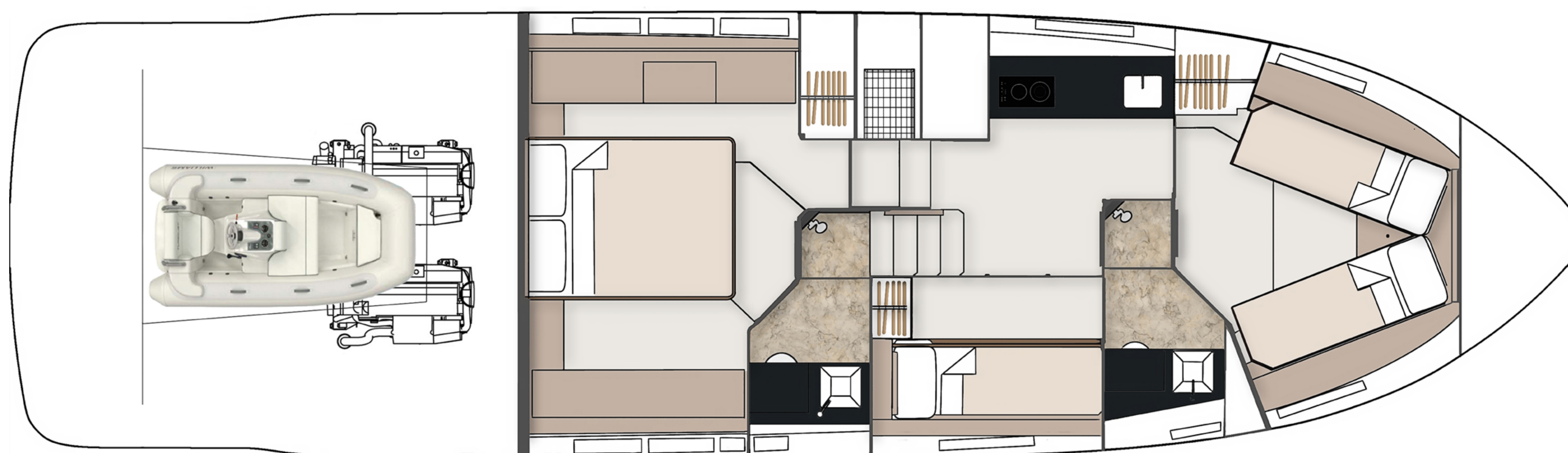
Main Deck

With its canvas retractable sun roof and spacious seating, the Targa 48 OPEN offers light open space for entertaining.



Lower Deck – 2 Cabin

Spacious with 2 or 3-cabin, two heads configuration options,
with twin berths that convert to a double in the forward guest cabin.



Lower Deck – 3 Cabin

In the 3-cabin configuration, the lower saloon is replaced with a third cabin - includes two extra full-length bunk beds.

Last year we celebrated our 50th anniversary

It was truly a Year Of Golden Moments

It's not enough to build a beautiful boat just for the sake of it. Building the kind of yachts which we are proud to put the Fairline name to, requires something more than just engineering genius or craftsmanship. It also requires the desire to create extraordinary moments for whoever owns it. Moments of joy, exhilaration, excitement...and even tranquility.

With 2017 being our 50th Anniversary, we took every possible opportunity to celebrate those incredible, golden moments since the brand's founder Jack Newington first launched the famous Fairline 19. This included moments like winning the World Yacht Trophy for 2017, becoming a finalist for the Motor Boat of the Year 2018 and being nominated for the European Powerboat of the Year 2018!



INTRODUCTION

MAIN
FEATURES

EXTERIOR
DESIGN

INTERIOR
DESIGN

PRINCIPLE
DIMENSIONS

GENERAL
ARRANGEMENTS

CELEBRATING
50 YEARS

DEALERS

An unrivalled dealership network

Just like the many parts that make up one of our extraordinary yachts, so too are international dealers handpicked and perfectly placed to cover anything and everything you could want from Fairline (you can visit fairline.com for details of your nearest dealer).

Fairline Argentina
Fairline Benelux & W. Germany
Fairline Brazil
Fairline Channel Islands
Fairline Chertsey
Fairline Chesapeake
Fairline Colombia
Fairline Costa Blanca
Fairline Côte d'Azur
Fairline Croatia

Fairline Cyprus
Fairline Denmark
Fairline Eastbourne
Fairline Florida
Fairline Great Lakes
Fairline Greece
Fairline Hong Kong
Fairline Ibiza
Fairline India
Fairline Israel

Fairline Italia
Fairline Japan
Fairline Korea
Fairline Lebanon
Fairline Malta
Fairline Menorca
Fairline Mexico
Fairline Middle East
Fairline Monaco
Fairline New South Wales

Fairline New York
Fairline New Zealand
Fairline North Mallorca
Fairline Poland
Fairline Portugal
Fairline Queensland
Fairline Russia
Fairline Singapore
Fairline South Africa
Fairline South China

Fairline South Mallorca
Fairline Southampton
Fairline Sverige
Fairline Switzerland
Fairline Thailand
Fairline Torbay
Fairline Turkey
Fairline Ukraine
Fairline Victoria
Fairline Western Australia



TARGA 48 OPEN